



Sharp Health Plan, San Diego County

Behavioral Health Medicare Provider Directory Addendum

———— **2025** ————

Behavioral Health Medicare Provider Directory Addendum

Sharp Health Plan, San Diego County 800-424-1565

[List of changes generated on: April 21, 2025]
Provider Directory Last Update: April 25, 2025

Terms of Use: *The list of providers was printed on the date noted above. To ensure the list of providers is current, please check you have the most up-to-date list. This list is subject to change without notice because it is updated every day. If you have questions about a provider or your program, please call the toll-free number which is located on the bottom of your program web page and on the back of your plan card. If you find incorrect provider information, please report it by clicking on the triangle icon, with an exclamation point, in the bottom left of the provider search result. If you have any difficulty obtaining an appointment, please call your program toll-free number for assistance.*

To File a Complaint: *Complaints regarding provider directory accuracy and/or completeness can be filed with your Plan by contacting the number referenced above or with the California Department of Managed Health Care by calling 1-888-466-2219.*

Quality Data: *The quality of hospitals and other facilities is reported by national organizations. Please visit the following websites to learn more: Quality Check (<http://www.qualitycheck.org/consumer/searchQCR.aspx>); Hospital Compare (<http://www.medicare.gov/hospitalcompare/search.html>); or The Leapfrog Group (<http://www.leapfroggroup.org/cp>).*

Accreditations: *Our hospitals/related organizations are accredited using the standards from the following sites: JCAHO (<http://www.qualitycheck.org/consumer/searchQCR.aspx>); HFAP (<http://www.hfap.org/AccreditedFacilities/index.aspx?FacilityType=HOSPN>); NIAHO/DNV (<http://dnvglhealthcare.com/hospitals>); CARF (<http://www.carf.org/providerSearch.aspx>); COA (<http://coanet.org/accreditation/who-is-accredited/who-is-accredited-search/>); or ACHC (<http://www.achc.org/resources/accreditedLocations>).*

Board Certifications: *Our doctors are certified using the standards from the following sites: ABMS (<https://www.certificationmatters.org/is-your-doctor-board-certified/search-now.aspx>) or AOA (<http://www.osteopathic.org/osteopathic-health/pages/find-a-do-search.aspx>).*

Providers by County

New Providers

Practitioner

SAN DIEGO

BANAL, JENNILYN MSN
ADV PRACT REG NURSE
PRESCRIBER
Accepting New Patients: Yes
1902 WRIGHT PL FL 2
CARLSBAD, CA 92008
Phone: (888)515-3834
URL: www.cheservices.com
NPI: 1386315729
Languages: ENGLISH,TAGALOG
Office Languages: ENGLISH
Board Certifications: PSYCH MH
NP
Hospital Affiliations:
Gender: Female
License Number: 838371
License Type: REG NURSE
Specialties: ADHD,Anxiety
Disorders,Depressive
Disorders,PTSD,Women's Issues

BANAL, JENNILYN MSN
ADV PRACT REG NURSE
PRESCRIBER
Accepting New Patients: Yes
1902 WRIGHT PL FL 2
CARLSBAD, CA 92008
Phone: (888)515-3834
URL: www.cheservices.com
NPI: 1386315729
Languages: ENGLISH,TAGALOG
Office Languages: ENGLISH
Board Certifications: PSYCH MH
NP
Hospital Affiliations:
Gender: Female
License Number: 95018066
License Type: NURSE
PRACTITIONER
Specialties: ADHD,Anxiety
Disorders,Depressive
Disorders,PTSD,Women's Issues

BANAL, JENNILYN MSN
ADV PRACT REG NURSE
PRESCRIBER
Accepting New Patients: Yes
1902 WRIGHT PL FL 2
CARLSBAD, CA 92008
Phone: (888)515-3834
URL: www.cheservices.com
NPI: 1386315729
Languages: ENGLISH,TAGALOG
Office Languages: ENGLISH
Board Certifications: PSYCH MH
NP
Hospital Affiliations:
Gender: Female
License Number: 95018066
License Type: NURSE
PRACTITIONER FURNISHING
Specialties: ADHD,Anxiety
Disorders,Depressive
Disorders,PTSD,Women's Issues

DENNIS, DARRIN MICHAEL MA&
OMPT-OTHER MASTER
THERAPIST
Accepting New Patients: Yes
5060 SHOREHAM PL STE 330
SAN DIEGO, CA 92122
Phone: (877)840-6956
URL: www.sokyahealth.com
NPI: 1841851722
Languages: ENGLISH
Office Languages: ENGLISH
Board Certifications:
Hospital Affiliations:
Gender: Male
License Number: 16594
License Type: LIC PROF CLNCL
COUNSLR
Specialties:

DONAYRE, LEONOR MSW
SOCIAL WORKER
Accepting New Patients: Yes
3517 CAMINO DEL RIO S STE 302
SAN DIEGO, CA 92108
Phone: (619)996-3195
URL: www.alohapsych.com
NPI: 1194362426
Languages: ENGLISH,SPANISH
Office Languages: ENGLISH
Board Certifications:
Hospital Affiliations:
Gender: Female
License Number: 128971
License Type: LIC CLNCL SW
Specialties:

GIELLA, DAVID PSYD
PSYCHOLOGIST
Accepting New Patients: Yes
2404 LORING ST
SAN DIEGO, CA 92109
Phone: (646)687-4646
URL: www.wellqor.com
NPI: 1083817951
Languages: ENGLISH
Office Languages:
ARMENIAN,ENGLISH,PAKISTANI,
SPANISH
Board Certifications:
Hospital Affiliations:
Gender: Male
License Number: 22230
License Type: PSYCHOLOGIST
Specialties:

GRAN, MARISSA PHD
PSYCHOLOGIST
Accepting New Patients: Yes
5820 OBERLIN DR STE 203
SAN DIEGO, CA 92121
Phone: (858)914-1347
NPI: 1871734756
Languages: ENGLISH
Office Languages: ENGLISH
Board Certifications:
Hospital Affiliations:
Gender: Female
License Number: 33066
License Type: PSYCHOLOGIST
Specialties: Depressive Disorders

Providers by County

GRAN, MARISSA PHD
PSYCHOLOGIST
Accepting New Patients: Yes
6190 CORNERSTONE CT E STE
216
SAN DIEGO, CA 92121
Phone: (858)914-1347
NPI: 1871734756
Languages: ENGLISH
Office Languages: ENGLISH
Board Certifications:
Hospital Affiliations:
Gender: Female
License Number: 33066
License Type: PSYCHOLOGIST
Specialties: Depressive Disorders

KIRKPATRICK, BAILEIGH PSYD
PSYCHOLOGIST
Accepting New Patients: Yes
6190 CORNERSTONE CT E STE
216
SAN DIEGO, CA 92121
Phone: (858)914-1347
NPI: 1376137372
Languages: ENGLISH
Office Languages: ENGLISH
Board Certifications:
Hospital Affiliations:
Gender: Female
License Number: 35138
License Type: PSYCHOLOGIST
Specialties:

KOUKLAN, GOLZAR PSYD&
PSYCHOLOGIST
Accepting New Patients: Yes
6190 CORNERSTONE CT E STE
216
SAN DIEGO, CA 92121
Phone: (858)914-1347
NPI: 1649544289
Languages:
ENGLISH,FARSI,PERSIAN
Office Languages: ENGLISH
Board Certifications:
Hospital Affiliations:
Gender: Female
License Number: 30945
License Type: PSYCHOLOGIST
Specialties: Anxiety
Disorders,Bipolar
Disorder,Depressive Disorders

LAMBERT, ELLEN MARIE MSN&
ADV PRACT REG NURSE
PRESCRIBER
Accepting New Patients: Yes
5060 SHOREHAM PL STE 330
SAN DIEGO, CA 92122
Phone: (877)840-6956
URL: www.sokyahealth.com
NPI: 1538891312
Languages: ENGLISH
Office Languages: ENGLISH
Board Certifications: PSYCH MH
NP
Hospital Affiliations:
Gender: Female
License Number: 95028755
License Type: NURSE
PRACTITIONER
Specialties:

LAMBERT, ELLEN MARIE MSN&
ADV PRACT REG NURSE
PRESCRIBER
Accepting New Patients: Yes
5060 SHOREHAM PL STE 330
SAN DIEGO, CA 92122
Phone: (877)840-6956
URL: www.sokyahealth.com
NPI: 1538891312
Languages: ENGLISH
Office Languages: ENGLISH
Board Certifications: PSYCH MH
NP
Hospital Affiliations:
Gender: Female
License Number: 95028755
License Type: NURSE
PRACTITIONER FURNISHING
Specialties:

LAMBERT, ELLEN MARIE MSN&
ADV PRACT REG NURSE
PRESCRIBER
Accepting New Patients: Yes
5060 SHOREHAM PL STE 330
SAN DIEGO, CA 92122
Phone: (877)840-6956
URL: www.sokyahealth.com
NPI: 1538891312
Languages: ENGLISH
Office Languages: ENGLISH
Board Certifications: PSYCH MH
NP
Hospital Affiliations:
Gender: Female
License Number: 95246744
License Type: REG NURSE
Specialties:

LAMBERT, ELLEN MARIE MSN&
ADV PRACT REG NURSE
PRESCRIBER
Accepting New Patients: Yes
5060 SHOREHAM PL STE 230
SAN DIEGO, CA 92122
Phone: (877)840-6956
URL: www.sokyahealth.com
NPI: 1538891312
Languages: ENGLISH
Office Languages: ENGLISH
Board Certifications: PSYCH MH
NP
Hospital Affiliations:
Gender: Female
License Number: 95028755
License Type: NURSE
PRACTITIONER
Specialties:

Providers by County

LAMBERT, ELLEN MARIE MSN&
ADV PRACT REG NURSE
PRESCRIBER
Accepting New Patients: Yes
5060 SHOREHAM PL STE 230
SAN DIEGO, CA 92122
Phone: (877)840-6956
URL: www.sokyahealth.com
NPI: 1538891312
Languages: ENGLISH
Office Languages: ENGLISH
Board Certifications: PSYCH MH
NP
Hospital Affiliations:
Gender: Female
License Number: 95028755
License Type: NURSE
PRACTITIONER FURNISHING
Specialties:

LAMBERT, ELLEN MARIE MSN&
ADV PRACT REG NURSE
PRESCRIBER
Accepting New Patients: Yes
5060 SHOREHAM PL STE 230
SAN DIEGO, CA 92122
Phone: (877)840-6956
URL: www.sokyahealth.com
NPI: 1538891312
Languages: ENGLISH
Office Languages: ENGLISH
Board Certifications: PSYCH MH
NP
Hospital Affiliations:
Gender: Female
License Number: 95246744
License Type: REG NURSE
Specialties:

LITTLE, THOMAS W MS&
OMPT-OTHER MASTER
THERAPIST
Accepting New Patients: Yes
5060 SHOREHAM PL STE 330
SAN DIEGO, CA 92122
Phone: (877)840-6956
URL: www.sokyahealth.com
NPI: 1265005524
Languages: ENGLISH
Office Languages: ENGLISH
Board Certifications:
Hospital Affiliations:
Gender: Male
License Number: 151799
License Type: LIC MRG & FMLY
THRPST
Specialties:

LOSCH, CHRISTIAN MSW
SOCIAL WORKER
Accepting New Patients: Yes
5820 OBERLIN DR STE 203
SAN DIEGO, CA 92121
Phone: (858)914-1347
NPI: 1265797831
Languages: ENGLISH
Office Languages: ENGLISH
Board Certifications:
Hospital Affiliations:
Gender: Male
License Number: 118740
License Type: LIC CLNCL SW
Specialties:

LOSCH, CHRISTIAN MSW
SOCIAL WORKER
Accepting New Patients: Yes
6190 CORNERSTONE CT E STE
216
SAN DIEGO, CA 92121
Phone: (858)914-1347
NPI: 1265797831
Languages: ENGLISH
Office Languages: ENGLISH
Board Certifications:
Hospital Affiliations:
Gender: Male
License Number: 118740
License Type: LIC CLNCL SW
Specialties:

SARGENT, BROOK ELIZABETH
MSN
ADV PRACT REG NURSE
PRESCRIBER
Accepting New Patients: Yes
3237 AVENIDA DE SUENO
CARLSBAD, CA 92009
Phone: (760)230-4572
NPI: 1134856602
Languages: ENGLISH,SPANISH
Office Languages:
ENGLISH,SPANISH
Board Certifications: PSYCH MH
NP
Hospital Affiliations:
Gender: Female
License Number: 752424
License Type: REG NURSE
Specialties: Depressive
Disorders,Telehealth OP BH

SARGENT, BROOK ELIZABETH
MSN
ADV PRACT REG NURSE
PRESCRIBER
Accepting New Patients: Yes
3237 AVENIDA DE SUENO
CARLSBAD, CA 92009
Phone: (760)230-4572
NPI: 1134856602
Languages: ENGLISH,SPANISH
Office Languages:
ENGLISH,SPANISH
Board Certifications: PSYCH MH
NP
Hospital Affiliations:
Gender: Female
License Number: 95023319
License Type: NURSE
PRACTITIONER
Specialties: Depressive
Disorders,Telehealth OP BH

Providers by County

SARGENT, BROOK ELIZABETH
MSN

ADV PRACT REG NURSE
PRESCRIBER

Accepting New Patients: Yes

3237 AVENIDA DE SUENO

CARLSBAD, CA 92009

Phone: (760)230-4572

NPI: 1134856602

Languages: ENGLISH,SPANISH

Office Languages:

ENGLISH,SPANISH

Board Certifications: PSYCH MH
NP

Hospital Affiliations:

Gender: Female

License Number: 95023319

License Type: NURSE

PRACTITIONER FURNISHING

Specialties: Depressive

Disorders,Telehealth OP BH

SARGENT, PAUL DOUGLAS MD
PSYCHIATRIST

Accepting New Patients: Yes

3237 AVENIDA DE SUENO

CARLSBAD, CA 92009

Phone: (760)230-4572

NPI: 1609990662

Languages: ENGLISH

Office Languages:

ENGLISH,HEBREW,RUSSIAN,SPANISH

Board Certifications: BRAIN

INJURY MED,PSYCHIATRY

Hospital Affiliations:

Gender: Male

License Number: A92480

License Type: PHYSICIAN

Specialties: Telehealth OP BH

TOMASINO, VANESSA F MSW &
SOCIAL WORKER

Accepting New Patients: Yes

5060 SHOREHAM PL STE 330

SAN DIEGO, CA 92122

Phone: (877)840-6956

URL: www.sokyahealth.com

NPI: 1821638123

Languages: ENGLISH,SPANISH

Office Languages: ENGLISH

Board Certifications:

Hospital Affiliations:

Gender: Female

License Number: 125750

License Type: LIC CLNCL SW

Specialties:

VERGARA, RONALD JAMES T
MSN

ADV PRACT REG NURSE

PRESCRIBER

Accepting New Patients: Yes

1902 WRIGHT PL FL 2

CARLSBAD, CA 92008

Phone: (888)515-3834

URL: www.cheservices.com

NPI: 1265257026

Languages: ENGLISH

Office Languages: ENGLISH

Board Certifications: PSYCH MH

NP

Hospital Affiliations:

Gender: Male

License Number: 690282

License Type: (UNKNOWN)

Specialties:

VERGARA, RONALD JAMES T
MSN

ADV PRACT REG NURSE

PRESCRIBER

Accepting New Patients: Yes

1902 WRIGHT PL FL 2

CARLSBAD, CA 92008

Phone: (888)515-3834

URL: www.cheservices.com

NPI: 1265257026

Languages: ENGLISH

Office Languages: ENGLISH

Board Certifications: PSYCH MH
NP

Hospital Affiliations:

Gender: Male

License Number: 95033008

License Type: NURSE

PRACTITIONER

Specialties:

VERGARA, RONALD JAMES T
MSN

ADV PRACT REG NURSE

PRESCRIBER

Accepting New Patients: Yes

1902 WRIGHT PL FL 2

CARLSBAD, CA 92008

Phone: (888)515-3834

URL: www.cheservices.com

NPI: 1265257026

Languages: ENGLISH

Office Languages: ENGLISH

Board Certifications: PSYCH MH
NP

Hospital Affiliations:

Gender: Male

License Number: 95033008

License Type: NURSE

PRACTITIONER FURNISHING

Specialties:

Providers by County

VERGARA, RONALD JAMES T
MSN
ADV PRACT REG NURSE
PRESCRIBER
Accepting New Patients: Yes
1902 WRIGHT PL FL 2
CARLSBAD, CA 92008
Phone: (888)515-3834
URL: www.cheservices.com
NPI: 1265257026
Languages: ENGLISH
Office Languages: ENGLISH
Board Certifications: PSYCH MH
NP
Hospital Affiliations:
Gender: Male
License Number: 95258563
License Type: REG NURSE
Specialties:

WONG, BRITNEY S MA&
OMPT-OTHER MASTER
THERAPIST
Accepting New Patients: Yes
5060 SHOREHAM PL STE 330
SAN DIEGO, CA 92122
Phone: (877)840-6956
URL: www.sokyahealth.com
NPI: 1033834023
Languages:
CHINESE,ENGLISH,MANDARIN
Office Languages: ENGLISH
Board Certifications:
Hospital Affiliations:
Gender: Female
License Number: 152277
License Type: LIC MRG & FMLY
THRPST
Specialties:

WONG, BRITNEY S MA&
OMPT-OTHER MASTER
THERAPIST
Accepting New Patients: Yes
5060 SHOREHAM PL STE 330
SAN DIEGO, CA 92122
Phone: (877)840-6956
URL: www.sokyahealth.com
NPI: 1033834023
Languages:
CHINESE,ENGLISH,MANDARIN
Office Languages: ENGLISH
Board Certifications:
Hospital Affiliations:
Gender: Female
License Number: 19022
License Type: LIC PROF CLNCL
COUNSLR
Specialties:

Termed Providers

Facility

SAN DIEGO

ALVARADO HOSP LLC
Facility
Accepting New Patients: Yes
6655 ALVARADO RD
SAN DIEGO, CA 92120
Phone: (619)287-3270
NPI: 1437627312
Languages: []
Office Languages: ENGLISH
Board Certifications:
Hospital Affiliations:
Gender:
License Number: 090000013
License Type: GEN ACUTE CARE
HOSP
Specialties: ECP-Hospital

Providers by County

Practitioner

SAN DIEGO

BERHE, HINZA MA&
OMPT-OTHER MASTER
THERAPIST

Accepting New Patients: Yes
2535 CAMINO DEL RIO S STE 303
SAN DIEGO, CA 92108
Phone: (619)940-7774
URL: <https://www.psychology-sandiego.com/>
NPI: 1225691124
Languages: ENGLISH
Office Languages:
Board Certifications:
Hospital Affiliations:
Gender: Male
License Number: 132681
License Type: LIC MRG & FMLY
THRPST
Specialties:

BLACKETT, ASHLEY MA
OMPT-OTHER MASTER
THERAPIST

Accepting New Patients: Yes
8772 CUYAMACA ST STE 103
SANTEE, CA 92071
Phone: (888)688-0248
URL: fusioncaregroup.com
NPI: 1669648838
Languages: ENGLISH
Office Languages: ENGLISH
Board Certifications:
Hospital Affiliations:
Gender: Female
License Number: 51950
License Type: LIC MRG & FMLY
THRPST
Specialties: Anxiety
Disorders, Depressive Disorders, Life
Coaching, PTSD, Panic Disorder

BLACKETT, ASHLEY MA
OMPT-OTHER MASTER
THERAPIST

Accepting New Patients: Yes
2124 S EL CAMINO REAL STE 101
OCEANSIDE, CA 92054
Phone: (888)688-0248
URL: www.fusioncaregroup.com
NPI: 1669648838
Languages: ENGLISH
Office Languages: ENGLISH
Board Certifications:
Hospital Affiliations:
Gender: Female
License Number: 51950
License Type: LIC MRG & FMLY
THRPST
Specialties: Anxiety
Disorders, Depressive Disorders, Life
Coaching, PTSD, Panic Disorder

BLACKETT, ASHLEY MA
OMPT-OTHER MASTER
THERAPIST

Accepting New Patients: Yes
2271 ALPINE BLVD STE A
ALPINE, CA 91901
Phone: (888)688-0248
URL: www.fusioncaregroup.com
NPI: 1669648838
Languages: ENGLISH
Office Languages: ENGLISH
Board Certifications:
Hospital Affiliations:
Gender: Female
License Number: 51950
License Type: LIC MRG & FMLY
THRPST
Specialties: Anxiety
Disorders, Depressive Disorders, Life
Coaching, PTSD, Panic Disorder

BLACKETT, ASHLEY MA
OMPT-OTHER MASTER
THERAPIST

Accepting New Patients: Yes
2300 BOSWELL RD STE 125
CHULA VISTA, CA 91914
Phone: (888)688-0248
URL: www.fusioncaregroup.com
NPI: 1669648838
Languages: ENGLISH
Office Languages: ENGLISH
Board Certifications:
Hospital Affiliations:
Gender: Female
License Number: 51950
License Type: LIC MRG & FMLY
THRPST
Specialties: Anxiety
Disorders, Depressive Disorders, Life
Coaching, PTSD, Panic Disorder

BLACKETT, ASHLEY MA
OMPT-OTHER MASTER
THERAPIST

Accepting New Patients: Yes
3511 CAMINO DEL RIO S STE 102
SAN DIEGO, CA 92108
Phone: (888)688-0248
URL: www.fusioncaregroup.com
NPI: 1669648838
Languages: ENGLISH
Office Languages: ENGLISH
Board Certifications:
Hospital Affiliations:
Gender: Female
License Number: 51950
License Type: LIC MRG & FMLY
THRPST
Specialties: Anxiety
Disorders, Depressive Disorders, Life
Coaching, PTSD, Panic Disorder

Providers by County

BLACKETT, ASHLEY MA
OMPT-OTHER MASTER
THERAPIST

Accepting New Patients: Yes
380 S MELROSE DR STE 404
VISTA, CA 92081

Phone: (888)688-0248
URL: www.fusioncaregroup.com
NPI: 1669648838

Languages: ENGLISH
Office Languages: ENGLISH

Board Certifications:

Hospital Affiliations:

Gender: Female

License Number: 51950

License Type: LIC MRG & FMLY
THRPST

Specialties: Anxiety
Disorders, Depressive Disorders, Life
Coaching, PTSD, Panic Disorder

BLACKETT, ASHLEY MA
OMPT-OTHER MASTER
THERAPIST

Accepting New Patients: Yes
9029 PARK PLAZA DR STE 101
LA MESA, CA 91942

Phone: (888)688-0248
URL: www.fusioncaregroup.com
NPI: 1669648838

Languages: ENGLISH
Office Languages: ENGLISH

Board Certifications:

Hospital Affiliations:

Gender: Female

License Number: 51950

License Type: LIC MRG & FMLY
THRPST

Specialties: Anxiety
Disorders, Depressive Disorders, Life
Coaching, PTSD, Panic Disorder

LEE, VERONIQUE N PSYD
PSYCHOLOGIST

Accepting New Patients: Yes
7825 FAY AVE

LA JOLLA, CA 92037

Phone: (626)354-6440

URL: www.mhccla.com

NPI: 1598951311

Languages: ENGLISH

Office Languages:
ENGLISH, HINDI, ITALIAN, SPANISH
, TAGALOG

Board Certifications:

Hospital Affiliations:

Gender: Female

License Number: 28772

License Type: PSYCHOLOGIST

Specialties:

BLACKETT, ASHLEY MA
OMPT-OTHER MASTER
THERAPIST

Accepting New Patients: Yes
3835 AVOCADO BLVD STE 270
LA MESA, CA 91941

Phone: (888)688-0248
URL: www.fusioncaregroup.com
NPI: 1669648838

Languages: ENGLISH
Office Languages: ENGLISH

Board Certifications:

Hospital Affiliations:

Gender: Female

License Number: 51950

License Type: LIC MRG & FMLY
THRPST

Specialties: Anxiety
Disorders, Depressive Disorders, Life
Coaching, PTSD, Panic Disorder

HENDLIN, TERRY MSW&
SOCIAL WORKER

Accepting New Patients: Yes
826 2ND ST

ENCINITAS, CA 92024
Phone: (760)585-5561

NPI: 1093891970

Languages: ENGLISH
Office Languages: ENGLISH

Board Certifications:

Hospital Affiliations:

Gender: Female

License Number: 23035

License Type: LIC CLNCL SW

Specialties: Anxiety
Disorders, Depressive
Disorders, Marriage/Family
Therapy, Victim Violence Abuse
Trauma, Women's Issues

VEAL, TIMOTHY M MD
PSYCHIATRIST

Accepting New Patients: Yes
10717 SORRENTO VALLEY RD
STE 210

SAN DIEGO, CA 92121

Phone: (858)925-6137

URL: www.kmgpsychiatry.com

NPI: 1326333485

Languages: ENGLISH

Office Languages: ENGLISH

Board Certifications: PSYCHIATRY

Hospital Affiliations:

Gender: Male

License Number: A124269

License Type: PHYSICIAN

Specialties: Marriage/Family
Therapy, Telehealth OP BH

Providers by County

VEAL, TIMOTHY M MD
PSYCHIATRIST
Accepting New Patients: Yes
1968 VIA CTR STE B
VISTA, CA 92081
Phone: (760)691-2370
URL: www.kmgpsychiatry.com
NPI: 1326333485
Languages: ENGLISH
Office Languages: ENGLISH
Board Certifications: PSYCHIATRY
Hospital Affiliations:
Gender: Male
License Number: A124269
License Type: PHYSICIAN
Specialties: Marriage/Family
Therapy, Telehealth OP BH

VEAL, TIMOTHY M MD
PSYCHIATRIST
Accepting New Patients: Yes
765 THIRD AVE STE 100
CHULA VISTA, CA 91910
Phone: (619)765-2684
URL: kmgpsychiatry.com
NPI: 1326333485
Languages: ENGLISH
Office Languages: ENGLISH
Board Certifications: PSYCHIATRY
Hospital Affiliations:
Gender: Male
License Number: A124269
License Type: PHYSICIAN
Specialties: Marriage/Family
Therapy, Telehealth OP BH

New Addresses

Practitioner

SAN DIEGO

CLARKE, KATHARINE A PHD
PSYCHOLOGIST
Accepting New Patients: Yes
252 N WISCONSIN ST
FALLBROOK, CA 92028
Phone: (714)813-9089
NPI: 1629092127
Languages: ENGLISH
Office Languages: ENGLISH
Board Certifications:
Hospital Affiliations:
Gender: Female
License Number: 14015
License Type: PSYCHOLOGIST
Specialties: Anxiety
Disorders, Chronic Pain, Depressive
Disorders, Group
Psychotherapy, Substance Abuse
Disorders

DE LA GARZA SR, RICHARD MPA
SOCIAL WORKER
Accepting New Patients: Yes
438 CAMINO DEL RIO S STE 106
SAN DIEGO, CA 92108
Phone: (855)550-6463
URL: www.openmindhealth.com
NPI: 1023451069
Languages: ENGLISH, SPANISH
Office Languages:
ARABIC, CREOLE
(HAITIAN), ENGLISH, FARSI, FILIPIN
O, GERMAN, JAPANESE, PORTUG
UESE, SPANISH, TAGALOG, VIETN
AMESE
Board Certifications:
Hospital Affiliations:
Gender: Male
License Number: 83253
License Type: LIC CLNCL SW
Specialties: ADHD, Anger
Management, Compulsive
Gambling, Panic Disorder, Victim
Violence Abuse Trauma

DONAYRE, LEONOR MSW
SOCIAL WORKER
Accepting New Patients: Yes
3517 CAMINO DEL RIO S STE 302
SAN DIEGO, CA 92108
Phone: (619)996-3195
URL: www.alohapsych.com
NPI: 1194362426
Languages: ENGLISH, SPANISH
Office Languages: ENGLISH
Board Certifications:
Hospital Affiliations:
Gender: Female
License Number: 128971
License Type: LIC CLNCL SW
Specialties:

FRANK, ERIC C MSW
SOCIAL WORKER
Accepting New Patients: Yes
3443 CAMINO DEL RIO S STE 325
SAN DIEGO, CA 92108
Phone: (619)269-6986
URL: www.lifeskillscounseling.net
NPI: 1710070859
Languages: ENGLISH
Office Languages: ENGLISH
Board Certifications:
Hospital Affiliations:
Gender: Male
License Number: 22363
License Type: LIC CLNCL SW
Specialties: Anxiety Disorders, Brief
Solution Focused, Depressive
Disorders, Dual Diagnosis-Mntl
Dsrdr/SA, Mental Health Counselor

Providers by County

HOPPER, LAURA E PHD
PSYCHOLOGIST
Accepting New Patients: Yes
158 C AVE
CORONADO, CA 92118
Phone: (619)435-5400
URL: sandiegopsychiatrist.com
NPI: 1861860595
Languages: ENGLISH
Office Languages:
ENGLISH,SPANISH
Board Certifications:
Hospital Affiliations:
Gender: Female
License Number: 25788
License Type: PSYCHOLOGIST
Specialties: Bipolar
Disorder,Obsessive Compulsive
Disorders,Psychotic
Disorders,Schizophrenia
Spectrum,Substance Abuse
Disorders

LEE, ESTHER H J ANP
ADV PRACT REG NURSE
PRESCRIBER
Accepting New Patients: Yes
600 W BROADWAY STE 700
SAN DIEGO, CA 92101
Phone: (562)279-0180
NPI: 1265200521
Languages: ENGLISH
Office Languages:
ENGLISH,FRENCH,KOREAN
Board Certifications: PSYCH MH
NP
Hospital Affiliations:
Gender: Female
License Number: 95027311
License Type: NURSE
PRACTITIONER
Specialties:

LEE, ESTHER H J ANP
ADV PRACT REG NURSE
PRESCRIBER
Accepting New Patients: Yes
600 W BROADWAY STE 700
SAN DIEGO, CA 92101
Phone: (562)279-0180
NPI: 1265200521
Languages: ENGLISH
Office Languages:
ENGLISH,FRENCH,KOREAN
Board Certifications: PSYCH MH
NP
Hospital Affiliations:
Gender: Female
License Number: 95027311
License Type: NURSE
PRACTITIONER FURNISHING
Specialties:

LEE, ESTHER H J ANP
ADV PRACT REG NURSE
PRESCRIBER
Accepting New Patients: Yes
600 W BROADWAY STE 700
SAN DIEGO, CA 92101
Phone: (562)279-0180
NPI: 1265200521
Languages: ENGLISH
Office Languages:
ENGLISH,FRENCH,KOREAN
Board Certifications: PSYCH MH
NP
Hospital Affiliations:
Gender: Female
License Number: 95067205
License Type: REG NURSE
Specialties:

SUTTON INOCENCIO, ELLIOT MN
ADV PRACT REG NURSE
PRESCRIBER
Accepting New Patients: Yes
2122 S EL CAMINO REAL STE 200
OCEANSIDE, CA 92054
Phone: (619)267-9257
NPI: 1346929312
Languages: ENGLISH
Office Languages:
ENGLISH,SPANISH
Board Certifications: PSYCH MH
NP
Hospital Affiliations:
Gender: Male
License Number: 95025993
License Type: NURSE
PRACTITIONER
Specialties: Addiction
Medicine,Depressive
Disorders,Personality
Disorders,Psychiatry,Psychiatry-
Addiction

SUTTON INOCENCIO, ELLIOT MN
ADV PRACT REG NURSE
PRESCRIBER
Accepting New Patients: Yes
2122 S EL CAMINO REAL STE 200
OCEANSIDE, CA 92054
Phone: (619)267-9257
NPI: 1346929312
Languages: ENGLISH
Office Languages:
ENGLISH,SPANISH
Board Certifications: PSYCH MH
NP
Hospital Affiliations:
Gender: Male
License Number: 95025993
License Type: NURSE
PRACTITIONER FURNISHING
Specialties: Addiction
Medicine,Depressive
Disorders,Personality
Disorders,Psychiatry,Psychiatry-
Addiction

Providers by County

SUTTON INOCENCIO, ELLIOT MN
ADV PRACT REG NURSE
PRESCRIBER

Accepting New Patients: Yes
2122 S EL CAMINO REAL STE 200
OCEANSIDE, CA 92054
Phone: (619)267-9257
NPI: 1346929312
Languages: ENGLISH
Office Languages:
ENGLISH,SPANISH
Board Certifications: PSYCH MH
NP
Hospital Affiliations:
Gender: Male
License Number: 95080229
License Type: REG NURSE
Specialties: Addiction
Medicine,Depressive
Disorders,Personality
Disorders,Psychiatry,Psychiatry-
Addiction

Termed Addresses

Practitioner

SAN DIEGO

KHOURY, LEANNE MA
OMPT-OTHER MASTER
THERAPIST
Accepting New Patients: Yes
1902 WRIGHT PL FL 2
CARLSBAD, CA 92008
Phone: (888)515-3834
URL: www.cheservices.com
NPI: 1720172521
Languages: ENGLISH,SPANISH
Office Languages: ENGLISH
Board Certifications:
Hospital Affiliations:
Gender: Female
License Number: 36880
License Type: LIC MRG & FMLY
THRPST
Specialties: Anger
Management,Anxiety
Disorders,Behavior Modification,Co-
occurring Medical
Problems,Depressive Disorders

WINEGAR, JUDI MSW
SOCIAL WORKER
Accepting New Patients: Yes
4700 SPRING ST STE 204
LA MESA, CA 91942
Phone: (619)504-7912
URL: judiwinegar.com
NPI: 1770882862
Languages: ENGLISH
Office Languages: ENGLISH
Board Certifications:
Hospital Affiliations:
Gender: Female
License Number: 26251
License Type: LIC CLNCL SW
Specialties: Anxiety
Disorders,Compulsive
Gambling,Depressive
Disorders,Substance Abuse
Disorders,Women's Issues

No Longer Accepting Patients

Practitioner

SAN DIEGO

DUBENKO, LYNN MARIE PHD
PSYCHOLOGIST
Accepting New Patients: No
12450 CARMEL VIEW NORTH
SAN DIEGO, CA 92130
Phone: (858)245-4688
NPI: 1578794889
Languages: ENGLISH
Office Languages: ENGLISH
Board Certifications:
Hospital Affiliations:
Gender: Female
License Number: 22882
License Type: PSYCHOLOGIST
Specialties: Biofeedback,Co-
occurring Medical
Problems,Cognitive Behavioral
Therapy

HAHN, DAVID T PSYD&
PSYCHOLOGIST
Accepting New Patients: No
1252 BROADWAY STE I
EL CAJON, CA 92021
Phone: (619)917-2569
NPI: 1881658235
Languages: ENGLISH
Office Languages: ENGLISH
Board Certifications:
Hospital Affiliations:
Gender: Male
License Number: 19168
License Type: PSYCHOLOGIST
Specialties: ADHD,Anxiety
Disorders,Cognitive Behavioral
Therapy,Depressive
Disorders,PTSD

Providers by County

HINTZ, SONYA DIANE MD&
PSYCHIATRIST

Accepting New Patients: No
3252 HOLIDAY CT STE 100
LA JOLLA, CA 92037
Phone: (858)455-6511
NPI: 1790774446
Languages: ENGLISH
Office Languages: ENGLISH
Board Certifications: PSYCHIATRY
Hospital Affiliations:
Gender: Female
License Number: G58561
License Type: PHYSICIAN
Specialties: Anxiety
Disorders,Bipolar
Disorder,Depressive
Disorders,PTSD,Personality
Disorders

HUTCHINSON, CASSANDRA

ROSE MA

OMPT-OTHER MASTER
THERAPIST

Accepting New Patients: No
5060 SHOREHAM PL STE 330
SAN DIEGO, CA 92122
Phone: (877)840-6956
URL: www.sokyahealth.com
<https://partner.headlight.health/magellan>
NPI: 1568913929
Languages: ENGLISH,SPANISH
Office Languages:
ENGLISH,FARSI,KOREAN,MANDARIN,PUNJABI,RUSSIAN,SPANISH,VIETNAMESE
Board Certifications:
Hospital Affiliations:
Gender: Female
License Number: 120903
License Type: LIC MRG & FMLY
THRPST
Specialties: Anxiety
Disorders,Depressive
Disorders,Marriage/Family
Therapy,Women's Issues

MADOFF, JEREMY PHD
PSYCHOLOGIST

Accepting New Patients: No
3914 MURPHY CANYON RD STE
A205
SAN DIEGO, CA 92123
Phone: (858)569-0454
NPI: 1740204569
Languages: ENGLISH
Office Languages: ENGLISH
Board Certifications:
Hospital Affiliations:
Gender: Male
License Number: 16980
License Type: LIC MRG & FMLY
THRPST
Specialties: Cultural Ethnic
Issues,Depressive
Disorders,Marriage/Family Therapy

MADOFF, JEREMY PHD
PSYCHOLOGIST

Accepting New Patients: No
3914 MURPHY CANYON RD STE
A205
SAN DIEGO, CA 92123
Phone: (858)569-0454
NPI: 1740204569
Languages: ENGLISH
Office Languages: ENGLISH
Board Certifications:
Hospital Affiliations:
Gender: Male
License Number: 7502
License Type: PSYCHOLOGIST
Specialties: Cultural Ethnic
Issues,Depressive
Disorders,Marriage/Family Therapy

MCKELLOGG GUAJARDO,
MEGAN A PSYD
PSYCHOLOGIST

Accepting New Patients: No
3821 FRONT ST
SAN DIEGO, CA 92103
Phone: (619)354-9081
NPI: 1952454043
Languages: ENGLISH,SPANISH
Office Languages:
ENGLISH,SPANISH
Board Certifications:
Hospital Affiliations:
Gender: Female
License Number: 23450
License Type: PSYCHOLOGIST
Specialties: Anxiety
Disorders,Depressive
Disorders,Divorce/Blended Family
Issues,Marriage/Family
Therapy,Women's Issues

METEVIER, DANIEL J PSYD
PSYCHOLOGIST

Accepting New Patients: No
3150 EL CAMINO REAL STE C
CARLSBAD, CA 92008
Phone: (760)354-9140
URL: www.danmetevier.com
NPI: 1376518316
Languages: ENGLISH
Office Languages: ENGLISH
Board Certifications:
Hospital Affiliations:
Gender: Male
License Number: 19748
License Type: PSYCHOLOGIST
Specialties: Anxiety Disorders,Brief
Solution Focused,Men's
Issues,PTSD,Victim Violence Abuse
Trauma

Providers by County

MONTES, JOSEPH MICHEL PHD PSYCHOLOGIST

Accepting New Patients: No
205 ROGAN RD
CHULA VISTA, CA 91910
Phone: (626)808-2196
NPI: 1376659474
Languages: ENGLISH,SPANISH
Office Languages: ENGLISH
Board Certifications:
Hospital Affiliations:
Gender: Male
License Number: 7770
License Type: PSYCHOLOGIST
Specialties: ADHD,Anxiety
Disorders,Depressive
Disorders,PTSD,Personality
Disorders

RODRIGUEZ, KATHERINE PSYD PSYCHOLOGIST

Accepting New Patients: No
750 B ST STE 2870
SAN DIEGO, CA 92101
Phone: (619)722-0014
NPI: 1184887010
Languages: ENGLISH,SPANISH
Office Languages:
ENGLISH,SPANISH
Board Certifications:
Hospital Affiliations:
Gender: Female
License Number: 21851
License Type: PSYCHOLOGIST
Specialties: Anger
Management,Anxiety
Disorders,Bipolar
Disorder,Obsessive Compulsive
Disorders,Psychological Testing

SACHS, BRUCE MORTON PHD& PSYCHOLOGIST

Accepting New Patients: No
8804 BALBOA AVE
SAN DIEGO, CA 92123
Phone: (858)637-3000
NPI: 1225190085
Languages: ENGLISH
Office Languages: ENGLISH
Board Certifications:
Hospital Affiliations:
Gender: Male
License Number: 14629
License Type: PSYCHOLOGIST
Specialties: Anxiety
Disorders,Bipolar
Disorder,Depressive
Disorders,Divorce/Blended Family
Issues,Psychological Services

SACHS, BRUCE MORTON PHD PSYCHOLOGIST

Accepting New Patients: No
2338 VALLEY MILL RD
EL CAJON, CA 92020
Phone: (619)749-8062
NPI: 1225190085
Languages: ENGLISH
Office Languages: ENGLISH
Board Certifications:
Hospital Affiliations:
Gender: Male
License Number: 14629
License Type: PSYCHOLOGIST
Specialties: Anxiety
Disorders,Bipolar
Disorder,Depressive
Disorders,Divorce/Blended Family
Issues,Psychological Services

STRUHL, LAURA S PHD PSYCHOLOGIST

Accepting New Patients: No
5173 WARING RD 206
SAN DIEGO, CA 92120
Phone: (858)694-0057
NPI: 1912086786
Languages: ENGLISH,SIGN
EXACT ENGL
Office Languages: ENGLISH
Board Certifications:
Hospital Affiliations:
Gender: Female
License Number: 12173
License Type: PSYCHOLOGIST
Specialties: Anxiety
Disorders,Cognitive Behavioral
Therapy,Depressive
Disorders,LGBTQIA+,Women's
Issues

VANFOSSEN, BRIAN PHD& PSYCHOLOGIST

Accepting New Patients: No
3434 MIDWAY DR STE 2001
SAN DIEGO, CA 92110
Phone: (619)325-1161
NPI: 1396072500
Languages: ENGLISH
Office Languages:
ENGLISH,SPANISH
Board Certifications:
Hospital Affiliations:
Gender: Male
License Number: 23462
License Type: PSYCHOLOGIST
Specialties: Medications
Management

Providers by County

WILLIAMS, MIRANDA B PSYD&
PSYCHOLOGIST

Accepting New Patients: No

7290 NAVAJO RD STE 105

SAN DIEGO, CA 92119

Phone: (619)733-6472

NPI: 1720003056

Languages: ENGLISH

Office Languages: ENGLISH

Board Certifications:

Hospital Affiliations:

Gender: Female

License Number: 19618

License Type: PSYCHOLOGIST

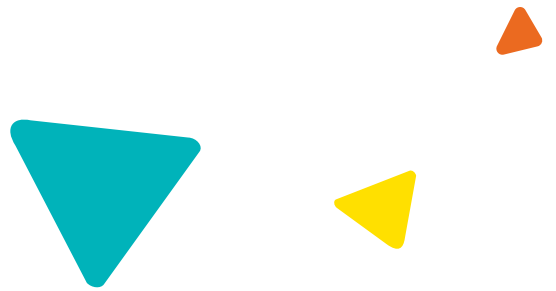
Specialties: Anxiety

Disorders, Depressive

Disorders, PTSD, Psychological

Testing, Victim Violence Abuse

Trauma



Magellan
HEALTHCARE®